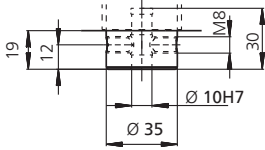


Press Type		43	343	45	345
Force F max. <sup>1)</sup>	kN	4	4	10	10
Force F at 100 % duty cycle <sup>2)</sup>	kN	2,5 <sup>3)</sup>	2,5 <sup>3)</sup>	6 <sup>3)</sup>	6 <sup>3)</sup>
Ram stroke	A mm	100	100	150	150
Ram speed max.	mm/s	150	150	200	200
Drive resolution	µm	< 1	< 1	< 1	< 1
Resolution PDA					
- Stroke	µm/inc		2,42		2,4
- Force	N/inc		1,25		3,0
Throat depth	C mm	129	129	129	129
Decibel level	dBA	60	60	60	60
Power supply					
- Motor power		42 V DC / 13 A (22 A max.)	42 V DC / 13 A (22 A max.)	230 V DC / 5,9 A (11,8 A max.)	230 V DC / 5,9 A (11,8 A max.)
- Logic unit		24 V DC / 0,5 A	24 V DC / 0,5 A	24 V DC / 0,5 A	24 V DC / 0,5 A
Working height frame 7-420 <sup>4)</sup>	F mm	62 – 420	62 – 420	50 – 360	50 – 360
Working height frame 7-600 <sup>4)</sup>	F mm	100 – 610	100 – 610		
S-H x S-B x S-T	mm	333 x 207 x 362	368 x 242 x 362	530 x 275 x 410	530 x 275 x 410
Weight	kg	35	35	52	52
PRC Gateway, number of I/O's			16 inputs / 16 outputs		16 inputs / 16 outputs
Mounting surface with Frame					
- No. 7-420	<sup>5)</sup> mm	292 x 366	292 x 366	320 x 366	320 x 366
- No. 7-600		292 x 468	292 x 468		

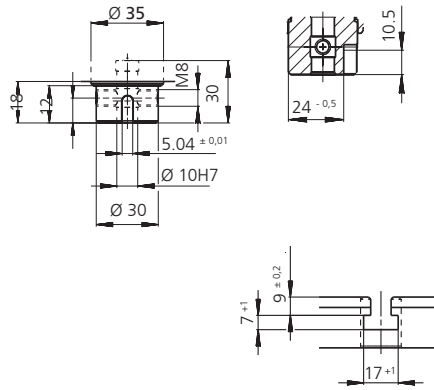
Frame Overview	Press Type	Frame Height M (mm)	Table Size B x T (mm)	Table Bore D Ø (mm)	Table Height K (mm)	Mounting surface B x L (mm)
No. 7-420	43, 343, 45, 345	740	180 x 150	20H7	90	220 x 362
No. 7-600	43, 343	960	180 x 280	20H7	110	220 x 465 – 505

- <sup>1)</sup> Temporary peak load
- <sup>2)</sup> Nominal power in continuous operation
- <sup>3)</sup> Minimum force for free positioning application is 400 N
- <sup>4)</sup> Typical values; can vary ± 3 mm due to casting and production tolerances
- <sup>5)</sup> Max. dimensions

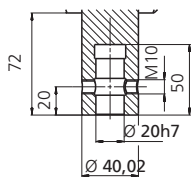
Press Type 43



Press Type 343



Press Type 45



Press Type 345

