

SCHMIDT® ServoPress

Modules with large application range



Press type 405



Press type 415/416



Press type 417

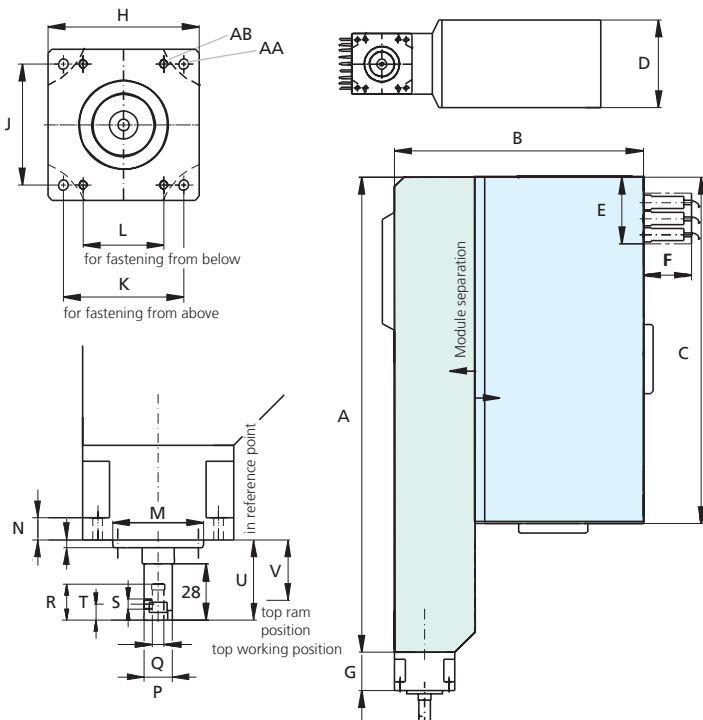


Press type 420

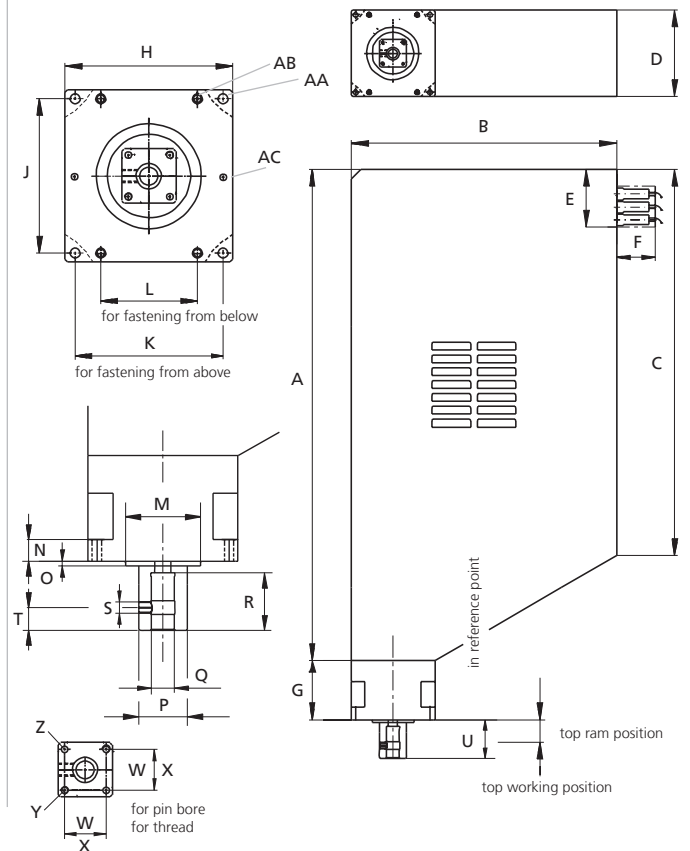


Press type 450/460

ServoPress 405



ServoPress 415 to 460



Modules

With force outputs of 15 N to 150 kN

ServoPress Type			405	415	416	417	420	450	460
Force F	F	kN	0.8	4.5	5	14	35	75	150
Force F at 100% duty cycle	F	kN	0.5	1.5	3	7.5	20	50	100 ¹⁾
Ram stroke		mm	150	200	200	300	400	500	500
Resolution (drive control)		µm	< 0.1	< 0.1	< 0.1	< 0.1	< 0.1	< 0.1	< 0.1
Resolution data acquisition									
Stroke		µm/inc	2.4	4	4	5	6	8	8
Force		N/inc	0.25	1	1	3.75	10	24	48
Ram speed		mm/s	0 - 300	0 - 200	0 - 200	0 - 200	0 - 200	0 - 200	0 - 100
Overload protection			-	Mech. clutch	Mech. clutch	Mech. clutch	Mech. clutch	Mech. clutch	Mech. clutch
Service life of the cycles acc. to standard operating profile			2 x 10 ⁷	2 x 10 ⁷	2 x 10 ⁷	2 x 10 ⁷	2 x 10 ⁷	2 x 10 ⁷	1 x 10 ⁷
Drive			ball screw	ball screw	ball screw	ball screw	roller screw	roller screw	roller screw
Power supply			230 V 1~/6.3 A (208 V 3~/6.3 A)	230 V 1~/6.3 A (208 V 3~/6.3 A)	230 V 1~/6.3 A (208 V 3~/6.3 A)	230 V 1~/16 A	400 V 3~/16 A	400 V 3~/35 A	400 V 3~/35 A
Weight (standard)		approx. kg	20	27	27	70	120	240	240
	A	mm	590	560	560	762	978	1166	1166
	B	mm	309	330	330	412	535	677	677
	C	mm	440	434	434	600	763	992	992
	D	mm	109	109	109	134	180	236	236
Cable connection	E	mm	~ 75	~ 75	~ 75	~ 90	~ 100	~ 90	~ 90
	F	mm	~ 60	~ 60	~ 60	~ 60	~ 60	~ 60	~ 60
Flange	G	mm	47	77	77	92	122	120	120
	H	mm	75	75	75	130	140	150	150
	J	mm ±0.1	60	88	88	120	160	210	210
	K	mm ±0.1	60	63	63	115	120	130	130
	L	mm ±0.1	40	59.4 x 59.4	59.4 x 59.4	75			
	M	∅ mm	45h6	45h6	45h6	65h6	90h6	100h6	100h6
	N	mm	11	11	11	19	32	33	33
	O	mm	4	4	4	4	5	5	5
	AA	∅ mm	5,3	6,3	6,3	8,4	10.1 / M12	12.0 / M14	12.0 / M14
	AB	∅ mm	M5	M6	M6	M8			
	AC	∅ mm						12.0 / M14	12.0 / M14
Ram									
External ram dimensions	P	mm	∅ 14	32 x 32	32 x 32	42 x 42	55 x 55	65 x 65	65 x 65
Ram bore (with bushing)	Q	∅ mm	6H7	10H7	10H7	20H7	20H7	20H7	20H7
	R	mm	18	30	30	50	40	50	50
	S		M5	M8	M8	M10	M10	M10	M10
	T	mm	8	10	10	20	20	20	20
Top working position	U	mm	40	50	50	60	60	60	60
Top ram position	V	mm	30	39	39	33	45	45	45
for pin bore	W	mm ±0.02		22	22	32	40	40	40
for thread	X	mm		22	22	32	40	40	40
	Y			M5	M5	M6	M8	M8	M8
	Z	∅ mm		5H7	5H7	5H7	8H7	8H7	8H7

¹⁾ 100 kN S3 66 % 30 s; 90 kN 100 % ED

Press Type		SP 405	SP 415/416	SP 417	SP 420	SP 450	SP 460
Frame							
Throat depth	C	mm	130	130	150	160	160
Table bore	D	∅ mm	20H7	20H7	40H7	40H7	40H7
Working height	F	mm	246	300	387	518	612
Table height	K	mm	93	113	128	155	190
Table size	B x T	mm	160 x 140	220 x 175	250 x 200	300 x 220	370 x 230
Mounting surface	B x SL6	mm	160 x 345	220 x 405	250 x 460	300 x 563	370 x 760
	O	∅ mm	9	11	11	13	13
	SL 1	mm	50	80	80	85	95
	SL 2	mm	220	250	250	300	350
	SL 3	mm				50	50
	SL 4	mm				350	400
	SL 5	mm	325	390	430	528	600
	SL 6	mm	345	405	460	563	635
	SH 1	mm	510	630	780	1080	1150
	SH 2	mm	1016	1100	1430	1835	2150
	SB 1	mm	140	200	220	280	350
	SB 2	mm	160	220	250	300	390

